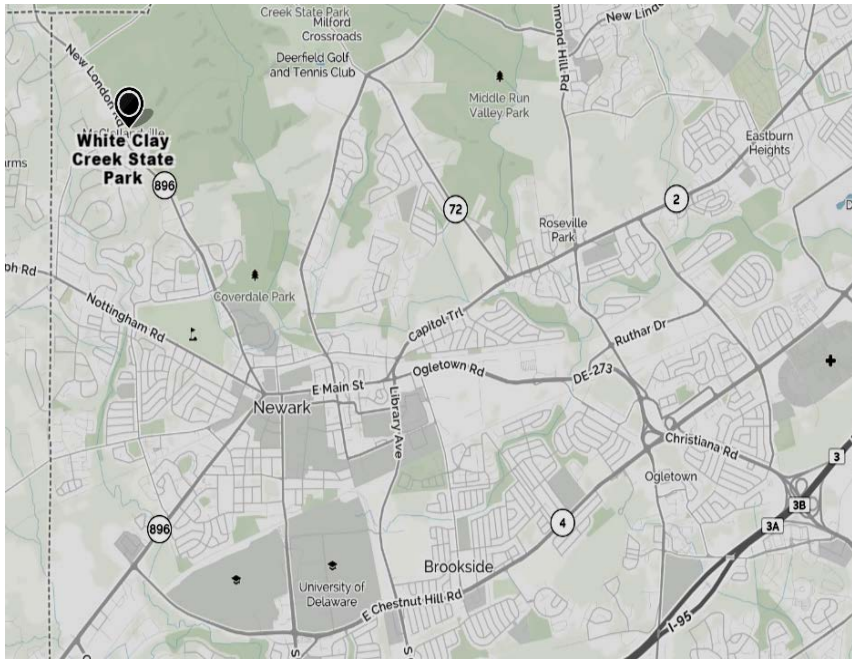


## DIRECTIONS

White Clay Creek State Park is located approx. 3 miles north of Newark, DE.

From I-95, take Exit 3 to merge onto DE-273 towards Newark. Stay on DE-273 for approx. 3.5 miles to DE-72 and turn right. A quick left on E. Cleveland Ave. and continue just over a mile to New London Rd./DE-896. Turn right on New London Rd. and go approx. 2 miles to the entrance of the park on the right. Follow the entrance road to the parking lot. Start Point is at the pavilion.

Coming from the North and West that avoids I-95, use the following directions: Take US-1 to PA-896 which is located between West Grove, PA and Oxford, PA. Go South about 15 miles on Route 896 which crosses into Maryland and then Delaware in rapid succession. The entrance to White Clay Creek State Park is on the left less than a mile after you have crossed the multiple state borders. Start Point is at the pavilion.



## Liberty Bell Wanderers Invite you to Celebrate

### Earth Day With a

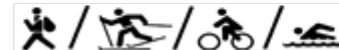
## Tri-State Border Crossing Walk Event In

## White Clay Creek State Park Newark, Delaware

### Saturday, April 22, 2017



Eligible for credit toward IVV Achievement Awards



AT17/ 107419

**SPONSOR:** Liberty Bell Wanderers  
**DATE:** **Saturday, April 22, 2017**

**START POINT:** White Clay Creek State Park  
Cameron Recreation Area  
880 New London Rd.  
Newark, DE 19711

**START TIMES:** 9:00 am to 11:00 am

**FINISH TIME:** 3:00 pm

**DISTANCE:** 10K. A shorter distance will be offered.

**TRAIL:** AVA Trail Rating 2B

**DESCRIPTION:**

Walk is on natural trails through White Clay Creek State Park. There are minor hills and some rough terrain. The route goes past the Arc Corner monument marking the point where Delaware and Pennsylvania meet. Then it continues on a looping trail that meanders through forests, meadows and around wetlands to the Tri-State Marker where the borders of Pennsylvania, Delaware and Maryland meet. Hiking shoes and walking sticks are recommended. Not recommended for strollers and wheelchairs.

**FEES:**

This is a **Credit Only** event. **IVV Credit is \$3.00.** This event is **Free** to those not receiving IVV Credit.

**SPECIAL PROGRAMS:**

Event qualifies for Border Crossings, Bridges – Spanning the USA, Points of Reference, Treasure Hunt, Trekking With the Trees, You'll Never Walk Alone. Since some of the trails go through the White Clay Creek Preserve, which is under control of Pennsylvania State Parks, the event also qualifies for the PA State Parks and Forests Challenge.

**PARKING:**

Parking is free. There is an **admittance fee** to enter the park. The fee for **Delaware residents is \$4.00/car.** The fee for **out-of-state residents is \$8.00/car.**

**ADDITIONAL INFORMATION:**

On June 6, 1765 Charles Mason and Jeremiah Dixon placed an oak post at the point on their survey where the northern boundary of Maryland intersected with the line between Maryland and the lower three counties of Pennsylvania (later to become Delaware). The current permanent marker was set at this location in 1849. (The marker is pictured on the front of this brochure.) A new trail to provide public access to this unique place in our nation's history was dedicated in 2015, which was the 250<sup>th</sup> anniversary of the Mason Dixon Survey.

**FACILITIES:** Restrooms are available at the Start/Finish only. Water will also be available at the Start/Finish and at the Checkpoint.

**ELIGIBILITY:** This event is open to the public. You do not need to be a member of the Liberty Bell Wanderers to participate. Adult supervision is required for all children.

**PROCEDURES:** All participants must register and complete a Start Card which is carried on the walk, and must be returned at the Finish. This also applies to free walkers.

**CONDITIONS:** This event will be held regardless of weather conditions. There are no refunds. **Pets are permitted must be leashed and picked up after.**

**DISCLAIMER:** The American Volkssport Association or its subsidiary clubs are not responsible for theft or loss of personal belongings or property. All participants must sign a waiver.

**CONTACT:** Dave Brown – 610-906-6252  
[ocmdbreeze@aol.com](mailto:ocmdbreeze@aol.com)  
[www.libertybellwanderers.net](http://www.libertybellwanderers.net)  
[www.ava.org](http://www.ava.org) Traditional Events  
Start Point Cell No. – 610-906-6252

*This event is sanctioned by the American Volkssport Association (AVA), a member of the International Federation of Popular Sports (IVV), and counts towards the acquisition of IVV Achievement Awards.*